



MB PLUS, STEEL STUD, FBX 1260 AND FBX 1280 METAL WALL INSULATION

PRODUCT NAME

MB Plus, Steel Stud, FBX 1260, and FBX 1280
Metal Wall Insulation

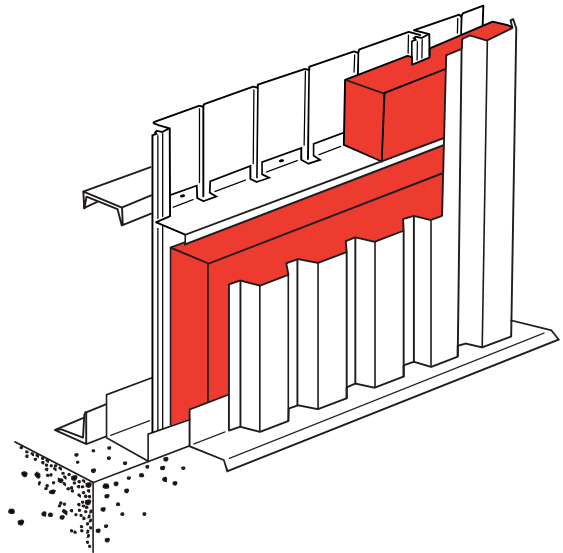
MANUFACTURER

FibreX Insulations Inc.
561 Scott Road
Sarnia, Ontario N7T 7L4
Phone: 1-800-265-7514
Fax: 1-800-363-4440

PRODUCT DESCRIPTION

MB Plus insulation is a semi-rigid batt and FBX 1260 and FBX 1280 are board products that provide superior acoustical, thermal, and fire resistance properties. It is manufactured from basaltic rock which provides a product with a melting point in excess of 2000°F (1093°C).

The fibres are bonded and formed into self-supporting semi-rigid batts, that provide superior handling, easy fabrication, and solid application capabilities.



PRODUCT INFORMATION

Complies with CAN/ULC S702 (formerly CAN/CSA A101M) as tested

STANDARD SIZES 16", 24", 32" x 48"
(406mm, 610mm, 813mm x 1220mm)

STANDARD THICKNESSES 1 1/2" - 9" (1/2" increments)
(38mm - 229mm)

MOISTURE ADSORPTION less than 0.1% by volume

SURFACE BURNING CHARACTERISTICS (ULC S102) (E-84)
Flame Spread 5
Smoke Developed 0

NON-CORROSIVE will not contribute to or cause corrosion
(ASTM C692, C795, C871)

Board CAN/CGSB 51-10-92
Batt CAN/CGSB 51-11-92

SPECIFICATION COMPLIANCE

NON COMBUSTIBLE ULC S114 (E-136)

FBX 1260 - Fire Wall Design W607 (1 hour) (2 hour)

FBX 1280 - Fire Wall Design W605 (1 hour) (2 hour)

*NOTE: 2 hour - derived from Equivalent Opening Factor Formula

THERMAL PERFORMANCE (ASTM C518)

FBX MB PLUS AND STEEL STUD		
THICKNESS	R VALUE	RSI
1.5"	6.00	1.05
2"	8.00	1.40
2.5"	10.00	1.75
3"	12.00	2.10
3.5"	14.00	2.45
4"	16.00	2.80

FIRE WALL DESIGN W607		
2 Layers @4" = 8" wall	1 hour	2 hour

FIRE WALL DESIGN W605		
2 Layers @3" = 6" wall	1 hour	2 hour



561 SCOTT ROAD, SARNIA, ONTARIO CANADA N7T 7L4
<http://www.fibrex.on.ca>

CUSTOMER SERVICE: 1-800-265-7514 1-519-336-7770 FAX: 1-800-363-4440
Technical Information: Please ask for the name of your area representative.