



SOUND ATTENUATION FIRE BATT (SAFB) INSULATION

PRODUCT NAME

FIBREX Sound Attenuation Fire Batt Insulation. (SAFB)

MANUFACTURER

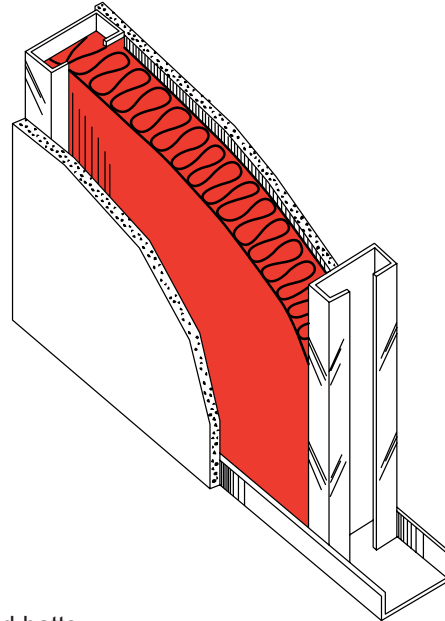
FibreX Insulations Inc.
561 Scott Road
Sarnia, Ontario N7T 7L4
Phone: 1-800-265-7514
Fax: 1-800-363-4440

PRODUCT DESCRIPTION

FibreX Sound Attenuation Fire Batt (SAFB) Insulation is a semi-rigid product that provides superior acoustical, thermal, and fire resistance properties when installed in partition wall and ceiling systems. It is manufactured from basaltic rock, utilizing patented technology, with a melting point in excess of 2000°F (1093°C).

The fibres are bonded and preformed into self-supporting semi-rigid batts.

FibreX SAFB's superior handleability means that the material is clean and can be easily fabricated and installed resulting in reduced labour costs.



PRODUCT INFORMATION

STANDARD SIZES	16" x 48" (406mm x 1220mm)	24" x 48" (610mm x 1220mm)
STANDARD THICKNESSES	1" to 4" (25mm to 102mm) 1/2" (13mm) increments	
THERMAL RESISTANCE	ASTM C518	1" R4 RSI .70 2" R8 RSI 1.40 3" R12 RSI 2.10
MOISTURE ABSORPTION	less than 0.1% by volume when tested in accordance with ASTM C 1104/C 1104M	
SURFACE BURNING CHARACTERISTICS	Flame Spread 5 Smoke Developed 0 when tested in accordance with CAN4-S102, ASTM E-84, and UL 723	
NON-COMBUSTIBILITY	material listed as non-combustible by ULC and ULI; tested in accordance with CAN4-S114 and ASTM E-136	
NON-CORROSIVE	will not cause or contribute to corrosion; NRC 1.36, ASTM C692, ASTM C795 and ASTM C871	

SOUND ABSORPTION COEFFICIENT @ Hz

THICKNESS	125	250	500	1000	2000	4000	NRC*
1.5" (38mm)	0.23	0.42	0.89	1.00	1.03	1.03	0.85
2" (51mm)	0.27	0.55	1.07	1.10	1.10	1.10	0.95
3" (76mm)	0.43	0.91	1.17	1.10	1.07	1.04	1.05
4" (102mm)	0.97	1.28	1.25	1.10	1.10	1.09	1.20

*Noise Reduction Coefficient

Tested in accordance with ASTM C423 and E795. The test specimen was applied directly against the test surface.

FIBREX - SAFB INSULATION STC VALUES

METAL STUD	INSULATION THICKNESS	LAYERS OF DRYWALL	STC VALUE
3 5/8"	2"	Single - 1/2"	48
3 5/8"	2"	Single - 5/8"	49
3 5/8"	3"	Single - 5/8"	51
3 5/8"	3"	Single - 1/2"	51
2 1/2"	1 1/2"	Double - 1/2" Single - 1/2"	50
2 1/2"	2"	Double - 1/2" Single - 1/2"	51

* Other STC values are available upon request

SPECIFICATION COMPLIANCE

ASTM C665, TYPE 1

ASTM C612

CAN/ULC S702.2 (Formerly CSA-A101-M83)

CAN/CGSB 51.11

DND - CONSTRUCTION MATERIALS BOARD (SCHEDULE 01000)

REFERENCE NO. 07212 - 04

CITY OF NEW YORK MEA 342-98-M



FIBREX

X

Insulations Inc.®

561 SCOTT ROAD
SARNIA, ONTARIO CANADA N7T 7L4
<http://www.fibrex.on.ca>

CUSTOMER SERVICE: 1-800-265-7514
1-519-336-7770
FAX: 1-800-363-4440

Technical Information:
Please ask for the name of your area representative.